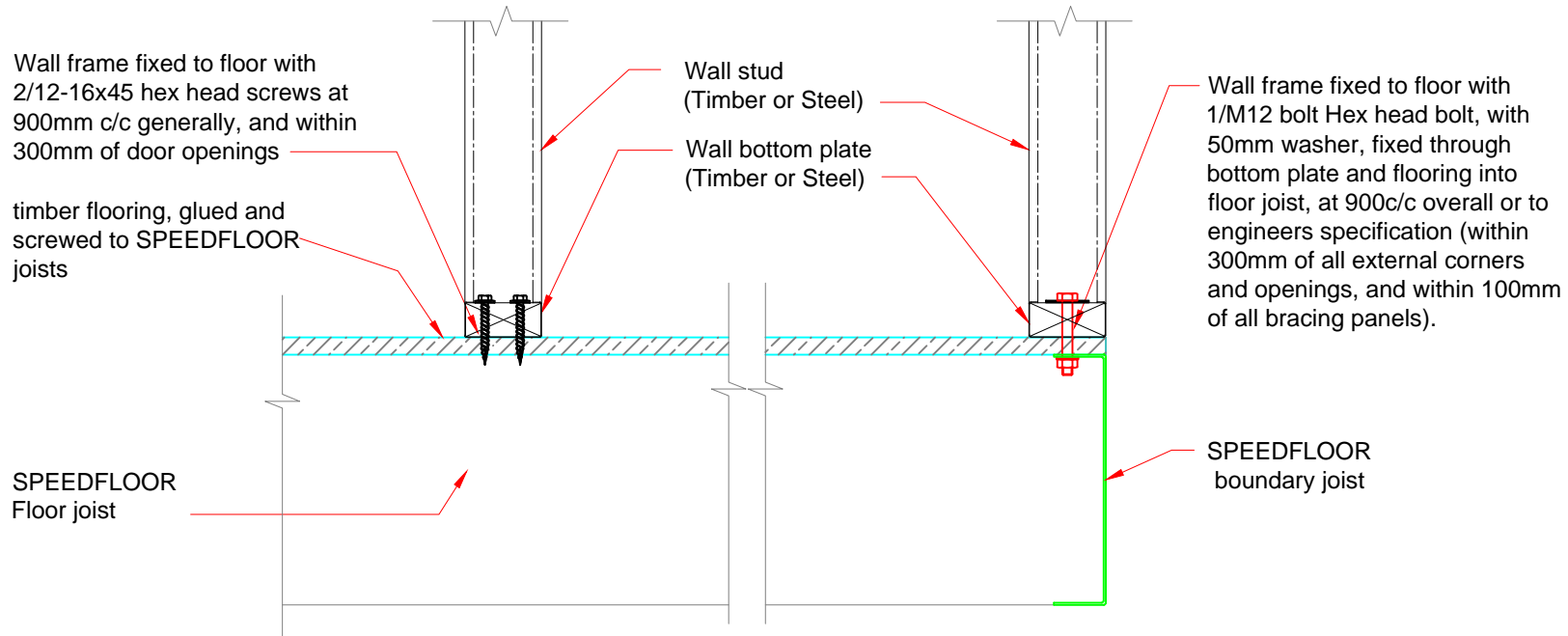


**INTERNAL WALL (UNBRACED)**

**LOAD BEARING EXTERNAL WALL**



**WD 2 - Int/Ext to SPEEDFLOOR Joists  
Timber Bottom Plate**

**Speedfloor**

Mail: P.O.Box5420  
Wellesley St  
Auckland NZ  
PH: +64 9 303 4825  
www.speedfloor.co.nz

Standard Details

Title  
Int/Ext to SPEEDFLOOR Joists Timber Bottom Plate

Scale  
1:10 @ A4

Rev  
B

Sheet

Drawn by  
EO

Date  
15/09/2015

WD 2